



# MAKING AN IMPACT

2025 ANNUAL REPORT

AT THE RESERVE CHARITABLE FOUNDATION,  
OUR MISSION IS TO ELEVATE AND ENRICH THE  
LIVES OF OUR UPSTATE NEIGHBORS IN NEED.

Since 2005, our members have embodied this mission by dedicating thousands of volunteer hours to local non-profits. Additionally, we have harnessed the generosity of our members and corporate partners to distribute millions of dollars to dozens of local charitable organizations that share our vision.

As a 501(c)(3), we concentrate our outreach in Pickens County because we are acutely aware of the economic and social challenges of the community in which we live. Focusing our efforts close to home, our vision is to foster healthier, happier, and more productive lives for those in our local community who need it most.

We are proud of our efforts but recognize we can do more. To guide our future outreach, we have committed to three primary pillars of impact.

These pillars guide our philanthropic and volunteer efforts but are hardly exhaustive. Indeed, we remain open to other initiatives that help improve the lives of our Upstate neighbors. We are committed to making a meaningful difference and helping build a stronger and more equitable community where everyone has an opportunity to thrive.



**ENDING HUNGER**



**CREATING  
SAFE SPACES**



**SUPPORTING  
LIFELONG LEARNING**



# DEAR FRIENDS

As I reflect on the past year, I am filled with gratitude and pride. Thanks to the generosity of our members, corporate partners, and friends, 2025 was the most successful year in the history of The Reserve Charitable Foundation. Together, we raised more than **\$653,000** — a powerful expression of care, trust, and shared commitment to the community around us.

Much of this generosity comes from individuals who call Old Edwards Reserve at Lake Keowee home. We live here together, in a beautiful and fortunate place. We know how blessed we are. With that privilege comes a responsibility—one we embrace—to support our neighbors across the Upstate who face challenges very different from our own. The Foundation exists to help bridge that gap with compassion, respect, and purpose.

In 2025, the Foundation distributed **over \$453,000** in ongoing grants to 20 charitable organizations, all of which are featured throughout this report. These partners carry out essential work aligned with our three pillars: Ending Hunger, Supporting Lifelong Learning, and Creating Safe Spaces. While this report highlights one organization within each pillar, our intention is broader—to recognize and support all of our partners over time and to honor the role each plays in strengthening Pickens County.

In addition to our ongoing grantmaking, the Foundation awarded **\$92,500** in special one-time grants to three of these organizations. These grants followed a months-long review process focused on understanding where additional resources could most meaningfully advance the work being done. They reflect our desire to be both thoughtful and responsive in how we give. We are also proud to have distributed \$37,000 in scholarships as part of our commitment to support local students who have the potential to be future community leaders.

The continued growth of the Foundation has also prompted reflection about the future. In 2025, our Board of Directors began a multi-year strategic planning process, made possible—and necessary—by your generosity. We are taking time to ask important questions about how best to build on what is working. That includes considering whether to continue our current approach or to find ways to deepen our impact on the challenges facing underserved individuals and families in our region.

What will not change is our commitment to stewardship, transparency, and care. Every dollar entrusted to the Foundation reflects a belief in community. Every grant we make is guided by respect—for our donors and for the people served by our charitable partners.

On behalf of the Board of Directors, thank you for your generosity, your trust, and your belief in this work. Together, we are using our good fortune to strengthen lives, support neighbors in need, and help ensure that compassion remains a defining value of the place we call home.

With sincere appreciation,

*Rick*

Rick Rother  
*Chairman | The Reserve Charitable Foundation*



**Rick Rother**  
*Board Chairman*



**Becky Gilstrap**  
*Executive Director*



**Sarah Center**  
*Assistant Director*



# ENDING HUNGER

Hunger is rarely just about food. For children, it can undermine learning and stability. For seniors, it is often accompanied by isolation, declining health, and the quiet loss of independence. Through its Ending Hunger pillar, The Reserve Charitable Foundation supports organizations that address food insecurity while also restoring dignity, connection, and care to those most in need.

In 2025, the Foundation invested more than **\$90,000** to support three trusted partners working across different stages of life: **Pickens County Meals on Wheels, Feed a Hungry Child, and Pickens Senior Center.** Together, these organizations ensure that children have access to nutritious meals and seniors receive reliable food support and remain connected to their community rather than facing hunger alone.

A cornerstone of this work is the Foundation's long-standing partnership with Pickens County Meals on Wheels, an organization that delivers far more than meals. Through a dedicated network of volunteers, Meals on Wheels provides nutritious food to homebound seniors across Pickens County while also

offering a vital daily connection to the outside world. Each weekday, hundreds of meals are delivered to seniors in their homes and through local senior centers, reaching more than 700 individuals each year.

For many recipients, this brief visit from a volunteer is the only personal interaction they may have on a given day. Volunteers understand that their role extends beyond food delivery—it is about companionship, reassurance, and presence. Over time, these consistent touchpoints become a lifeline, helping seniors maintain independence, dignity, and a sense of belonging.

The Reserve community has supported Pickens County Meals on Wheels for nearly two decades through grant funding, board service, and hands-on volunteerism. Dozens of members regularly deliver meals across Six Mile, Liberty, Easley, and Central, often stepping in to fill open routes and sustaining the program through long-term commitment. Their involvement reflects a shared belief that seniors should be able to age safely and with respect in the communities they call home.

*"BRIEF deeply appreciates our partnership with The Reserve Foundation, which empowers Pickens County kids for a brighter future through innovation and entrepreneurship training. Funding and volunteers enable work in afterschool programs at three Title 1 schools, with plans to expand to all 12 schools."*

**MAC DEVINE**  
EXECUTIVE DIRECTOR



*"The mission of SCOP is to provide a safe, comfortable place for seniors and guests to remain social and enjoy meals, music, games, Fiber Arts, and activities. Support from The Reserve at Lake Keowee Foundation allows us to maintain facilities, provide meals, cover utilities, and sustain our mission."*

**TERRY HOUSTON**  
TREASURER



*“At the Legacy Home, we believe recovery is more than sobriety—it’s complete transformation requiring time, resources, and community. The Reserve Foundation has provided men in recovery a safe place to heal while offering emotional, practical, and relational building blocks for a healthy, stable life.”*

**LYNDY SCHONHAR**

ENGAGEMENT AND IMPACT  
COORDINATOR

*“The Reserve Foundation has been a vital supporter of the Prevention Program at Family Promise of Pickens County. Thanks to your generosity, we assisted 48 families—including 96 children—helping them remain safely housed during financial and emotional crises while rebuilding stability and hope.*

**CATHERINE JOHNSON**

PREVENTION SPECIALIST AND  
OFFICE MANAGER





Safety is more than a roof overhead—it is the foundation for healing, dignity, and hope. Through its Creating Safe Spaces pillar, the Foundation partners with organizations that provide refuge and stability for individuals facing abuse, illness, addiction, or housing insecurity, helping them regain footing during life’s most difficult moments.

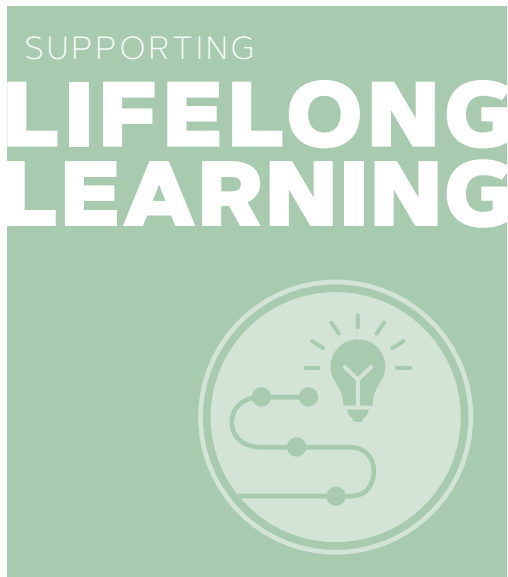
In 2025, the Foundation awarded nearly **\$160,000** in grants to organizations working on the front lines of safety, stability, and healing across our region. These investments strengthened critical services provided by **Purple Heart Homes Golden Corner Chapter, Safe Harbor, Helping Hands of Clemson, Neighborhood Cancer Connection, Samaritan Health Clinic, Legacy Home of Recovery, The Dream Center, Upstate Warrior Solution, and Family Promise**—each addressing urgent needs with compassion, expertise, and local insight.

Among these partners, we are proud to support **Pickens County Advocacy Center**, whose mission is to prevent sexual violence and support survivors through trauma-informed care, education, and collaboration across

Pickens County. PCAC provides free, comprehensive services — including counseling, legal advocacy, crisis intervention, hospital accompaniment, and prevention education—meeting survivors at some of the most vulnerable moments of their lives.

Over the past year, the demand for PCAC’s services has grown sharply. More survivors are reaching out for help, and hospital calls tied to sexual assault have increased, underscoring both the urgency and complexity of the work. At the same time, volunteer capacity has declined, placing greater pressure on a small, dedicated team working to meet expanding needs with limited resources.

Even amid these challenges, PCAC continues to respond—connecting survivors to critical services, standing beside them in moments of crisis, and helping them reclaim a sense of safety and control. Their work reflects the broader purpose of the Foundation’s grantmaking: creating environments where people are not only protected, but empowered to heal, rebuild, and move forward with dignity.



Learning does not begin or end at a single age or stage of life. It is a lifelong process—shaped by early childhood experiences, reinforced through school and workforce development, and sustained by opportunities to grow, adapt, and thrive over time. The Foundation’s commitment to Supporting Lifelong Learning reflects this belief, supporting programs that expand access to education, skill-building, and personal growth for individuals at every point along life’s path.

One important expression of that commitment is our support of **Camp iRock**, an intensive summer intervention program designed for students in grades one through three who are reading below grade level. Through a collaborative partnership with United Way of Pickens County, the YMCA of Easley, Pickens and Powdersville the School District of Pickens and Anderson Counties, and Clemson University’s Call Me MiSTER program, Camp iRock blends academic rigor with engaging, confidence-building instruction that makes reading both accessible and enjoyable.

The program is intentionally designed to combat the “summer slide” and ensure students

return to school prepared to learn rather than struggling to catch up. Research consistently shows that children who are not reading at grade level by the end of third grade face long-term academic challenges and are less likely to graduate from high school. By addressing this risk early, Camp iRock helps strengthen the foundation upon which future learning is built.

Beyond early literacy, the Foundation’s Supporting Lifelong Learning efforts extend across critical stages of life. We are proud to support organizations including **Blue Ridge Innovation and Entrepreneurship Foundation, Dolly Parton’s Imagination Library, Center for Developmental Services, Happy Hooves Therapeutic Equestrian Center, and Ripple of One** — each providing opportunities that help individuals build confidence, independence, and opportunity.

Together, these partnerships reflect a long-term commitment to growth and possibility. When learning is supported early and reinforced often, it strengthens not only individual lives, but the social and economic fabric of the entire community.

*“Camp iRock combines intensive reading instruction with enriching camp experiences to help struggling K-3rd grade readers maintain and grow literacy skills over the summer. It’s more than reading—it’s summer fun. Through generous support from donors like the Reserve Charitable Foundation, 95% of campers maintain or improve reading levels.”*

**JULIE CAPALDI**

PRESIDENT OF UNITED WAY  
PICKENS COUNTY



*“The Center for Developmental Services brings together specialized providers to serve children and individuals with developmental delays and disabilities in one convenient location. Support from The Reserve at Lake Keowee helps us continue creating a space where therapies, collaboration, and community empower children to reach their fullest potential.”*

**JOY BLUE**

DIRECTOR OF DEVELOPMENT



# SCHOLARSHIPS

While the primary focus of The Reserve Charitable Foundation is to support local charities that align with our mission, we are committed to supporting local students who hold the potential to be the next generation of community leaders. The Reserve Foundation Education Scholarship program was established in 2018 to support the higher education aspirations of Reserve employees and their immediate families, and employees, and beneficiaries/clients of our charities through college, technical, and trade school scholarships.

WE WERE ABLE TO GRANT TWELVE SCHOLARSHIPS, TOTALING \$37,000 TO THESE RECIPIENTS FOR THE 2025-2026 SCHOOL YEAR.



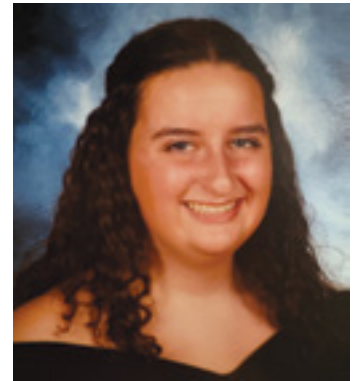
**ALEX BUTCHER** (BRIEF)  
Tri-County Technical College -  
Computer Science



**ISSAC ESUARY** (Pickens  
County Career and Technology  
Center) Clemson University -  
Computer Engineering



**RILEY FREEMAN** (Pickens  
County Career and Technology  
Center) Anderson University -  
Criminal Justice and Forensics



**KALYNN HERRING** (Pickens  
County Career and Technology  
Center) Anderson University -  
Nursing



**PIPER HITCH** (Pickens County  
Career and Technology Center)  
Appalachian State University -  
Political Science



**HANNAH JOHNSON**  
(Center for Developmental Services)  
Greenville Technical College -  
Veterinary Assistant



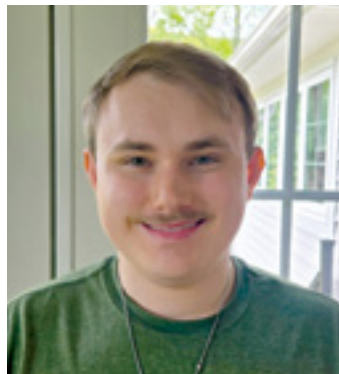
**CAIN PILGRAM** (Pickens  
County Career and Technology  
Center) Clemson University -  
Mechanical Engineering



**BEN REEVES** (Pickens County  
Career and Technology Center)  
Clemson University - Engineering



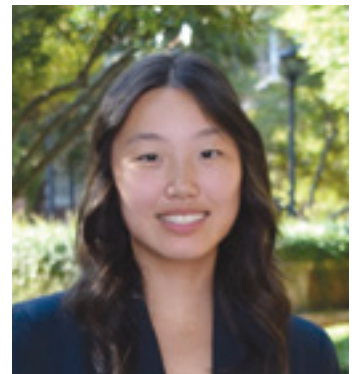
**RYANN SHEPHERD**  
(RLK staff) University of South  
Carolina Upstate - Business



**RALPH TALLMAN**  
(Pickens County Career and  
Technology Center) Tri-County  
Tech - Machine Technology



**MICHAEL VALDIVA** (Ripple  
of One) Greenville Technical College  
- Architectural Drafting



**KEYLA ZHAO** (Pickens County  
Career and Technology Center)  
University of Pennsylvania -Business



# VOLUNTEERS

Dozens of Reserve members donate hundreds of hours of their time each year with a hands-on approach to helping our neighbors in need. Their efforts are inspiring.

Some of those members volunteer with the charitable organizations we support and often engage directly with those who are most in need, whether they be children, veterans or senior citizens. Other members volunteer directly with the Foundation, serving on committees, supporting fundraising efforts or working in broader leadership and administrative roles.

TO LEARN MORE ABOUT  
VOLUNTEER OPPORTUNITIES,  
GO TO OUR LINK ON THE  
RESERVE APP.



SCAN FOR VOLUNTEER  
OPPORTUNITIES

# OUR DONORS ENABLE OUR EFFORTS



SCAN TO  
DONATE

The impact the Reserve Charitable Foundation has in Upstate South Carolina would not be possible without the generosity of our donors. We are grateful for your financial contributions as well as your volunteer efforts.

For 2025, donor levels will be tiered as follows:

**PLATINUM - \$10,000+**     **SILVER - \$2,000 - \$4,999**  
**GOLD - \$5,000 - \$9,999**     **BRONZE - \$1,000 - \$1,999**

All donors in these categories are recognized in this Annual Report. In addition, each year The Reserve Lifestyle Fund underwrites a major donor event at the Orchard House. Beginning in 2025, this event will include those who contribute at the Silver level and above.

We encourage Reserve members to consider the use of tax-smart options that can maximize your impact on the charities we support while potentially providing significant tax advantages. These include:

**APPRECIATED STOCK**

**DONOR-ADVISED FUND**

**QUALIFIED CHARITABLE DISTRIBUTIONS (QCDS)  
FROM YOUR IRA**

*Consult your Tax Advisor for additional information.*

## 2025 DONORS

### PLATINUM \$10,000+

Wes Bigler and Lori Jones  
Dick and Chris Bishop  
Jean Borden  
Erv and Cindy Burbach  
Robert and Eydie Clement  
Ray and Lucia Cohen

William and Kimberly Coward  
Brandon and Lisa Eich  
Johan and Kristen Eveland  
Jim and Kay King  
Jim and Deb Kovanda  
Rick and Sherry Morgan

Peter and Marie Norgeot  
Susan Peters and Ross Russo  
Robert and Angela Thompson  
Robert and Teresa Trout  
James Whitley  
Michael and Dianne Witham

### GOLD \$5,000 - \$9,999

Martin and Ashley Agard  
Tom and Sherri Andersen  
Andrew and Daniela Baxter  
Ed and Shelley Burchfield  
Doug and Diane Dix  
Larry and Susie Larson  
Ruben and Marilyn Lemos  
Greg and Sandra Lewis  
Tom and Carol Lund

Norm and Karen Malo  
John and Lindsay McShane  
Rick and Cheryl Miffin  
David and Elizabeth Miller  
Gary and Diane Mohr  
John and Robin Moulton  
Gary and Leigh Ann Nieman  
Lorin and Karen Olson  
Jeffery and Kristin Peterson

Charlie and Lydia Pratt  
Rick and Laura Rother  
Elaine Roberts and Dale Wilde  
Robert Sneider & Michelle Tortorella  
Roy and Nancy Sutterfield  
Scott and Melissa Tannen  
Craig and Laura Vanley  
John and Doreen Zanotelli

## SILVER \$2000 - \$4,999 *(In honor of Barbara Evans)*

Eddie Adams  
Johnson and Henny Au-Yeung  
David and Debbie Baughman  
John and Carol Boes  
Garry and Melissa Brown  
Thomas and Cynthia Brown  
Paul and Stephanie Bruemmer  
Wayne and Gayle Burrer  
Jon and Pam Cabot  
Vince and Joyce Connolly  
Larry DeFever and Caren Smith  
Thomas and Michelle DeJonge  
David and Wanda Doumar  
John and Patsy DuPre  
Russ Rhodus and Karen Dyehouse  
Jim and Valerie Easterling  
Ben and Georgia Elley

John and Eleanore Feininger  
Ray and Suzy Foral  
Phil and Kelly Gervasi  
Kevin and Holly Greenawalt  
James and Lee Heery  
Jeff and Liza Holder  
Clayton and Beverly Hollis  
Dave and Wendy Holscher  
Robert and Kathy Irwin  
Robert and Sharon Johnson  
Don and Jane Kelley  
Mike and Nancy Kennedy  
Brad and Daphne Kisker  
Grady and Mary Jo McCarthy  
Mark and Karen McGough  
Doug and Sandra McKinney  
Dale and Melissa McKinney

Danny and Angie McMullan  
James and Linda Mueller  
Mike and Stephanie Neely  
Richard Kruzynski and Gail Nelson  
Chris and Tracy Nolan  
Michael and Kathy Panther  
Rex and Karen Parkinson  
Michael and Barbara Policastro  
Tim and Mary Preece  
Robert and Patricia Ries  
Joseph Sachs  
David and Julie Scott  
Chris and Beth Smith  
Jim and Ellen Stork  
Michael and Patty Terzich  
Justin and Beth Winter

## BRONZE \$1,000 - \$1,999

Charlie and Anita Arms  
Chris and Lyssa Ball  
Gary and Stephanie Burns  
Craig and Lori Diem  
Randy Dobbs  
Paul and Audrey Fulton  
Chris and Shelley Holloway  
Michael and Barbara Huska  
Rick and Linda Klausung

Brian and Anne Kreider  
Scott and Jan Mackenzie  
Michael and Mimi McClure  
Rupert and Jessica McCormac  
Dan and Diana McGonigle  
Rich and Kathy Meyer  
Randall Reinker and Mary Ligocki  
Randy and Susan Satterfield  
Bill and Nancy Schlegel

Dann and Colette Schwartz  
John Taylor and Jaime Tataro  
Rick and Kay Vaughan  
Jim and Tina Voelker  
Scott and Sarah Wagoner  
Marc and Macaulay White  
Todd and Donna White  
Terry and Bonnie Will  
David and Stephanie Yucius

## CORPORATE SPONSORS / DONORS

Atcheson Dental  
Audi Greenville (Marc White)  
Carlton Motorcars Inc  
Central Signature Homes  
Coldwell Banker Caine  
Cullum Services, Inc.  
Diamond T Promotions  
DMI Paving & Sealcoating  
Elite Pavement Services  
Fairview Custom Homes  
FirstService Residential  
GBS Building Supply  
Glenco Fireplaces  
Golden Corner Construction  
(Ron & Misti Tolley)  
Greenspace Landscape Services  
Greenville Automotive/Porche  
Homrich Berg Wealth Mgt.

Hotwire Communications  
JC Sports  
Jeff Holder Builders (Jeff Holder)  
Justin Winter & Associates  
(Justin Winter)  
Keeoco Development (Will Hines)  
Kisker Construction (Brad Kisker)  
Kroeger Marine  
Lakenorth Investments (Derek Lunka)  
LocoMart (Eddie Adams)  
McKinney Insurance (Doug McKinney)  
McKinney-Sullivan (Dale McKinney)  
Metrocon Inc.  
MHK Architecture  
Nealy's Pro Wash  
Palmetto Upstate Group  
& DreamYard Sports  
Petra Wealth Mgt. (James Easterling)

Pittman Heating & Air Inc  
Progressive Builders Inc  
Professional Party Rentals  
ProSource  
RCI Landscaping  
Red Door Design  
Reserve Real Estate Group  
Ridgeline Construction Group  
(Ray Foral)  
Rogers Petroleum  
Seamon Whiteside  
Shorescapes Inc  
The Berry Group  
The Stillwater Group, LLC  
(Brandon Eich)  
US Foods  
Yoders Building Supply



# FUNDRAISING

## WINE & DINE

Our largest fundraising event of the year took in over \$240,000 in 2025

## CHARITY GOLF CLASSIC

This two-day event attracted more than 230 participants and helped us raise over \$130,000

## ART SHOP SALE

Several other smaller fund-raising events are critical to our success. The most visible of these is our annual Artisan Shop Sale, which raised over \$9,000 in 2025 for charity

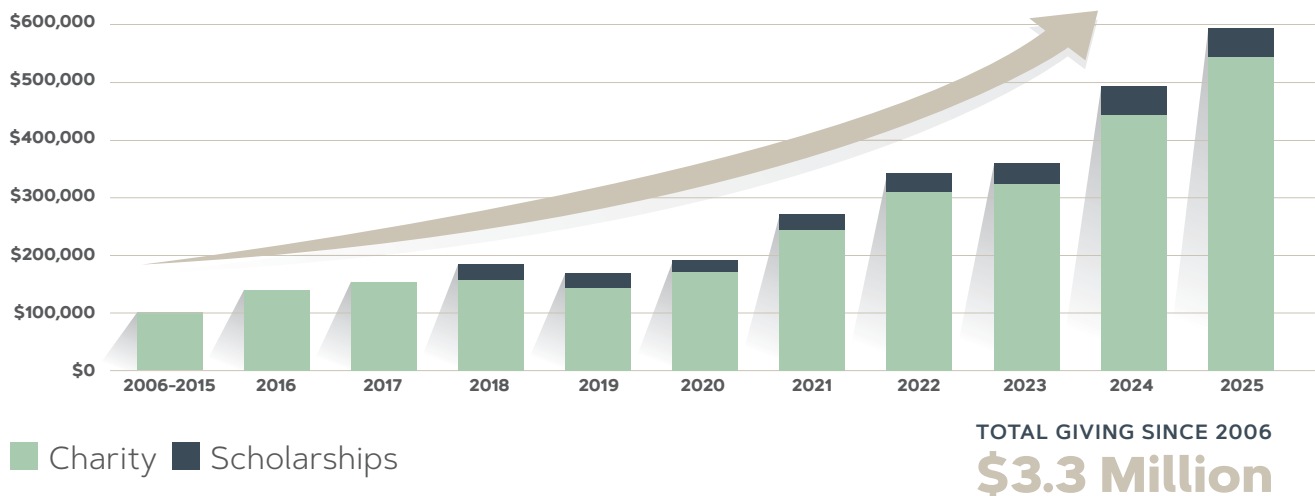


THE RESERVE AT LAKE KEOWEE  
**CHARITABLE FOUNDATION**

STATEMENT OF CASH FLOWS

	<b>2025</b>	<b>2024</b>
<b>Fund Balance, Beginning of Year</b>	<b>\$194,755</b>	<b>\$131,233</b>
<b>Operating Revenue:</b>		
Charity Donations	329,370	198,892
Spring Fundraiser	267,774	274,786
Golf Classic	165,776	166,480
Art Shop	9,679	9,159
Other Income	50	4,608
	<b>772,649</b>	<b>653,925</b>
<b>Operating Expense:</b>		
Charity Grants	569,458	464,026
Scholarship Grants	37,000	33,500
Programs & Events	68,807	75,889
Administrative	11,427	16,699
	<b>686,693</b>	<b>590,114</b>
<b>Operating Surplus / (Deficit)</b>	85,956	63,811
<b>Non-Operating Revenue / (Expense)</b>	6,614	0
<b>Net Payables Increase / (Decrease)</b>	76,178	(289)
<b>Fund Balance, End of Year</b>	<b>\$363,503</b>	<b>\$194,755</b>

2006-2025  
 GRANTS & SCHOLARSHIPS





## BOARD OF TRUSTEES

---

Rick Rother | Chairman

Diane Dix | Vice Chairman

John Zanolelli | Treasurer

Elaine Roberts | Secretary

Susan Peters

Lindsay McShane

Jim King

John Moulton

Charlie Pratt

864.481.4010

[Foundation@ReserveKeowee.com](mailto:Foundation@ReserveKeowee.com)

190 Village Green Loop, Sunset, SC 29685

[OldEdwardsReserve.com/Foundation](http://OldEdwardsReserve.com/Foundation)

