

LIFESTYLE™

*Preferred*  
HOTELS & RESORTS



THE  
*Palms*  
HOTEL & SPA



PROPERTY INFORMATION



## Meeting & Production Services

For meetings with a particular finesse, inspire attendees with The Palms' laid-back sophistication and boutique-style exclusivity. With over 8,000 sq. ft. (740m<sup>2</sup>) of meeting space and a total of 9 meeting rooms, The Palms is large enough to accommodate all types of groups, from conferences and incentive groups to teambuildings and production teams, yet small enough to provide personalized service, exclusivity and authenticity. Our meeting spaces include two elegant ballrooms with large windows, providing essential brightness and cutting edge technology such as top-of-the-line sound and light systems, integrated AV system and projection screens and individual climate control. We also offer a variety of outdoor function spaces with views of our magnificent gardens, ideal for group meals or functions. With modern amenities and a highly trained convention services staff, we will assure that business truly becomes a pleasure during your event.

Our tropical setting with a wide and flat private beachfront also makes The Palms an ideal location for photoshoots. With its flexible meeting rooms, which can easily be converted into convenient production rooms, as well a special production rates and experienced on-site staff, the hotel is one of the prime addresses to host productions and production groups on Miami Beach.

### Meetings and production service highlights at The Palms include:

- Over 8,000 sq. ft. (740m<sup>2</sup>) of meeting space across 9 meeting rooms
- 2 bright ballrooms with natural light and 7 breakout rooms
- Largest capacity: 120 classroom / 216 banquet
- Around 3,600 sq. ft. (335m<sup>2</sup>) of lobby space ideal for exhibits
- Beautiful outside function spaces including covered Veranda Terrace, restaurant terraces and garden areas
- Pool and beachside events possible (subject to City permitting)
- Customized menu planning
- Restaurant-grade catering menus, including organic, local and healthful selections
- Health and earth friendly products and initiatives
- Destination management services
- 84" 4K displays with a 6 point touch system
- Audiovisual equipment rental



### ROYAL PALM

Located on the Lobby Level, our largest meeting room offers a total of 2,652 sq. ft. (246m<sup>2</sup>) with a capacity of 280 guests Reception, 216 Banquet and 120 Classroom Style. The room features large windows, a high ceiling and mirrors which give the room a light and airy feel so important for conferences and meetings. It also has adjustable lighting, appropriate acoustics and two projection screens, as well as individual climate and lighting controls, Clear Air Meeting freshener as well as wireless and wired internet options.



### QUEEN PALM

Also located on the Lobby Level, our second largest meeting room features French doors with direct access to the Lobby, Veranda Terrace and our gardens as well as floor-to-ceiling windows with black-out curtains for AV presentations. It also features a state-of-the-art integrated AV System with touch-screen controls for all your presentation needs including a screen, LED projector and sound system. With 1,720 sq. ft. (160m<sup>2</sup>) it can accommodate 150 guests Reception, 70 Classroom and 38 U-Shape Style.



### PRINCESS PALM

Our third meeting room on the Lobby Level features a high ceiling, large windows and much natural light, which can be dimmed through blinds, as well as wireless and wired internet access, 84" 4K display, house phones and plenty of power outlets. With 400 sq. ft. (37m<sup>2</sup>) it can accommodate 30 guests Theatre Style or 20 guests Conference Style.



### KENTIA PALM I & II

These flexible rooms on the Spa Level when combined create our 3rd largest meeting room with 980 sq. ft. (91m<sup>2</sup>). The room features abundant natural daylight through large windows, which can be dimmed through blinds, 84" 4K display, and accommodates 78 guests Theatre Style and 36 guests Hollow Square Style.



### COCONUT PALM

This bright room is located on the Spa Level and features large windows with plenty of natural light, which can be dimmed through blinds and an 84" 4K display. At 784 sq. ft. (73m<sup>2</sup>) it accommodates 72 guests Theatre Style, 36 guests Classroom and 24 guests U-Shape Style.



### SABAL PALM

This room is also located on the Spa Level and is an ideal room for small board meetings, break-outs or an office with 420 sq. ft. (39m<sup>2</sup>). It features an 84" 4K display and space for up to 32 guests Theatre Style and 18 guests Classroom Style.



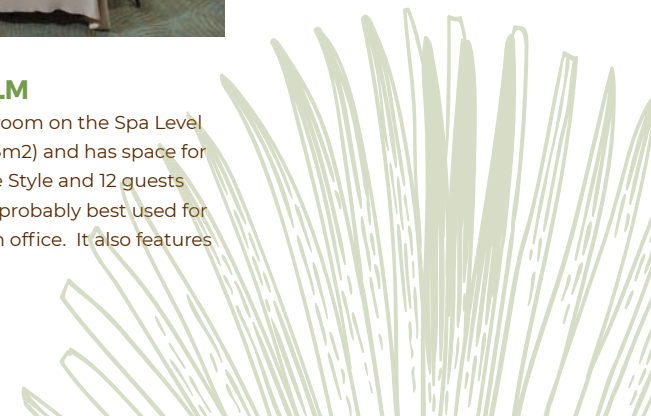
### SILVER PALM

Another one of our meeting rooms on the Spa Level features 399 sq. ft. (37m<sup>2</sup>) with space for 32 guests Theatre Style and 16 guests Conference Style is ideal as a production office or break-out room, and features an 84" 4K display for board meetings too.



### ROEBELLINI PALM

Our intimate meeting room on the Spa Level comprises 252 sq. ft. (23m<sup>2</sup>) and has space for up to 24 guests Theatre Style and 12 guests Conference Style yet is probably best used for small meetings or as an office. It also features an 84" 4K display.







## Function Areas



### ROYAL PALM

Our largest Ballroom offers space for 280 guests Reception and 216 Banquet Style. Large windows, high ceilings with elegant lighting and unique chandeliers as well as mirrors give the room a grand ambiance. The room's neutral décor serves as a blank canvas to create any ambiance you desire while its integrated state-of-the-art AV System will assist you with any such requirements during your event.



### QUEEN PALM

This elegant yet tropical Ballroom features French doors with direct access to the Veranda Terrace, floor to ceiling windows with unrestricted views of our gardens and Gazebo as well as an artfully crafted chandelier, wall lighting and a state-of-the-art integrated AV System. This room can accommodate 150 guests Reception and 120 Banquet Style.



### VERANDA TERRACE

Our large covered terrace is the ideal area for al-fresco breakfasts or brunches, cocktail receptions or casual dinner functions. It overlooks the gardens and offers direct access from the Queen Palm room. It provides ample space for up to 180 guests Reception and 120 guests Banquet Style.



### TRELLIS

Much loved breakfast and break-out area for corporate groups as well as a great place for after dinner drinks or small get-togethers. The Trellis area can accommodate up to 50 guests Reception and 30 guests Banquet Style.



### RESTAURANT TERRACE

The Restaurant Terrace is also available for small group lunches or dinners for up to 25 guests.



### RESTAURANT POOL TERRACE

Close to the pool and in the midst of our tropical gardens this terrace is the perfect venue for relaxed lunches or laid-back dinners for up to 60 guests.



### LOUNGE TERRACE

Our tropical Lounge Terrace offers space for up to 60 guests for cocktail receptions, pre-event drinks or intimate get-togethers.



### TROPICAL GARDEN DECK

Located on the southern part of our pool, this tropical Terrace is the perfect setting for an al-fresco group breakfast of up to 40 people.



### GRAND TIKI

The Grand Tiki is located towards the back of our resort and overlooks our South Lawn. With ample covered and uncovered space this is the perfect location for al-fresco breakfasts or brunches, cocktail receptions or elegant dinner functions. It provides seating for up to 158 guests.



### GREAT ROOM

Located in the heart of the hotel, right off the Main Lobby and the Lounge Terrace, this grand space, with colonial and tropical accents offers rooms for up to 60 guests reception style.



### SOUTH LAWN

This wonderful garden setting with possible additional use of the Tiki huts will provide for a balmy and tropical Miami Beach event. For an al-fresco dinner reception under the stars it can accommodate up to 150 guests Banquet Style and for a cocktail reception up to 200 guests.



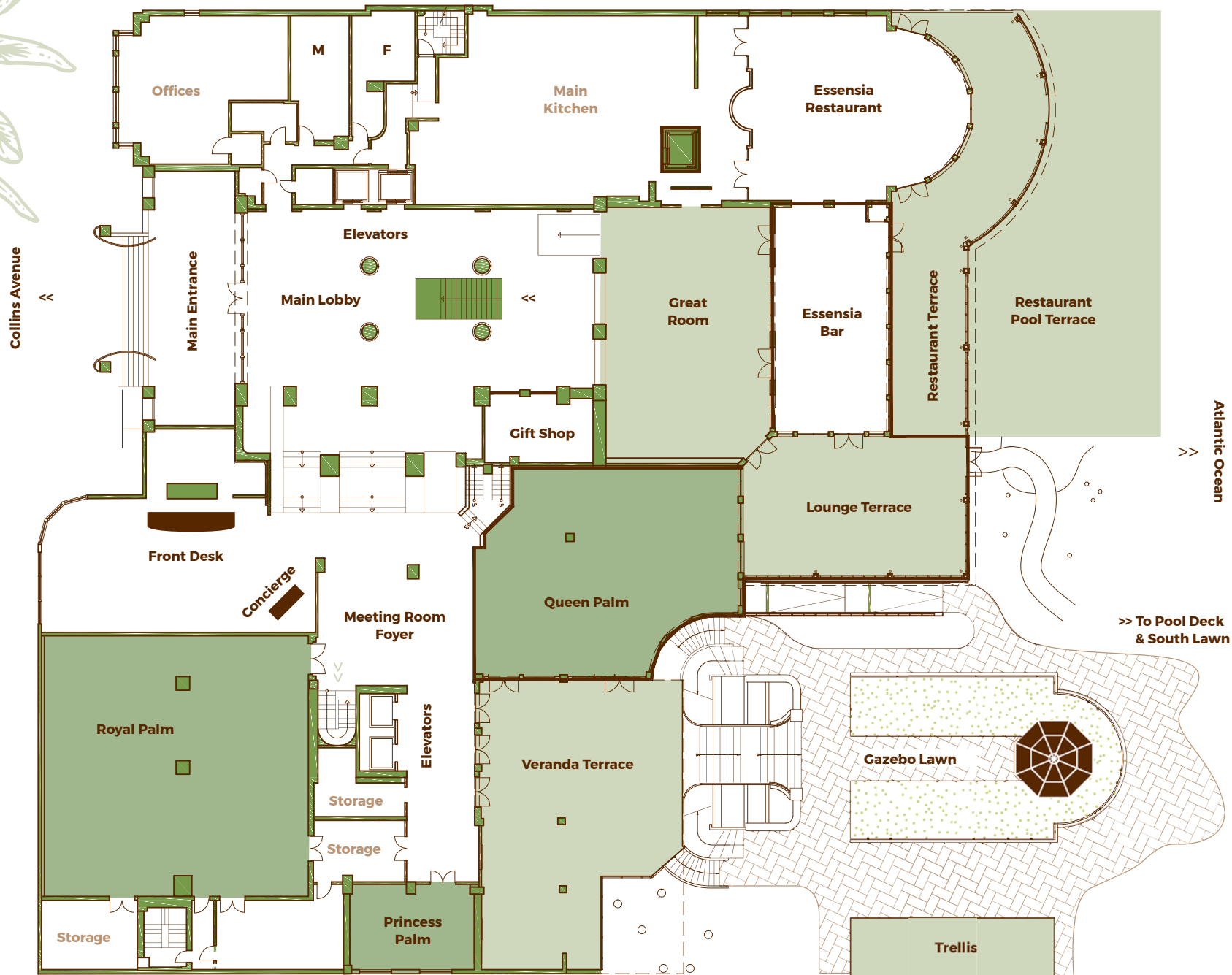
### KENTIA FOYER

Located just outside the Kentia, Sabal, and Silver Palm meeting rooms, this Foyer is ideally situated for coffee breaks and also provides enough room for registration tables for all of our Spa Level Meeting Rooms.



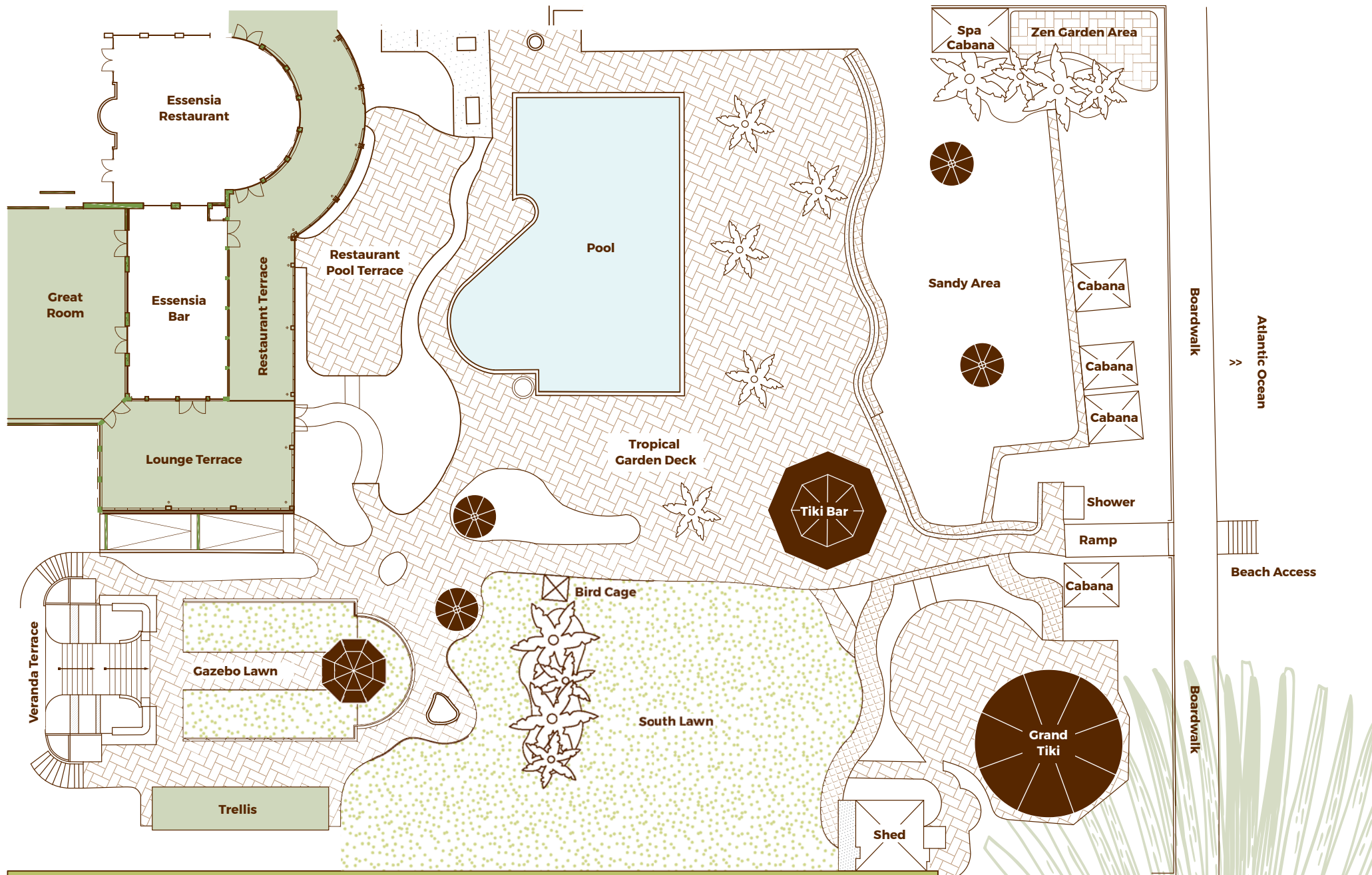


Lobby Level





# Pool Level





Spa Level



DESCRIPTIONS & MEASUREMENTS

Specifications	Royal Palm	Queen Palm	Princess Palm	Kentia I + II Palm	Kentia I Palm	Kentia II Palm	Coconut Palm	Sabal Palm	Silver Palm	Roebellini Palm	Veranda Terrace	Gazebo Lawn	Trellis	Rest. Terr.	Rest. Pool Terr.	Lounge Terrace	Tropical Gard Deck	South Lawn	Grand Tiki	Great Room
Dimensions	52x51x12	43x40x10	25x16x12	28x35x8	28x21x8	28x14x8	28x28x8	21x20	21x19	14x18	39x37	34x30	50x16	74x13	61x23	44x25	67x23	52x52	54x42	49x31
Sq. Ft.	2,652	1,720	400	980	588	392	784	420	399	252	1,918	1,020	800	962	1,403	1,100	1,541	2,704	2,268	1,519
M2	246	160	37	91	55	36	73	39	37	23	178	95	74	89	130	102	143	251	186	141
Reception	280	150	35	80	50	40	80	45	42	26	180	80	50		60	60	80	200	200	60
Theater	210	120	30	78	50	27	72	32	32	24		150	38						158	
Banquet	216	120	24	60	30	20	50	24	24	10	120	60	30	25	60		40	150	130	
Classroom	120	70	20	45	24		36	18	18	9									60	
Conference	40	40	20	26	20	15	20	16	16	12									32	
U-Shape	45	38		30	20		24	15	15										30	





## General Facts

### LOCATION

Set in the heart of Miami Beach on the northern side of South Beach, in the popular Mid Beach Area, The Palms Hotel sits on its own stretch of beach just 12 miles from Miami International Airport and 9 miles from the Miami downtown business district. The area offers numerous attractions including shopping, art galleries, cafés, restaurants and design houses, the Miami Beach Convention Center, the New World Symphony, nightlife of Ocean Drive, Lincoln Road, Collins and Washington Avenues.

### DINING & LEISURE

**Essensia Restaurant** features an intimate dining room for 54 diners as well as a Caribbean-style covered terrace and a breezy poolside terrace for another 70 diners while delivering down-to-earth dining at its finest, with natural inspiration, sustainable sourcing and tropical ambience.

**Essensia Bar** located adjacent to the restaurant will help you start or complete your balmy tropical nights with hand-crafted cocktails, a selection of natural wines and delicious bar bites. A regular Happy Hour can be enjoyed both in-doors and on the breezy outdoor terrace to add to the evenings enjoyment.

**The Tiki Bar** located poolside serves light snacks and drinks throughout the day.

**Beach & Pool:** The Palms features a large heated swimming pool as well as a prime beachfront location featuring lounges, sun umbrellas, beach towels and food/beverage service.

**Garden:** Lush gardens provide a laid-back, tropical ambience and are home to a variety of palms, exotic orchids, birds of paradise, private Tiki Cabanas and two beautiful parrots, Sunshine and Chance.

### SPA

The hotel's luxury Aveda lifestyle spa is a 5,000-square foot (465m<sup>2</sup>) facility, featuring holistic treatments and rituals set to deliver a highly personalized experience. Facilities include a series of multi-purpose rooms including a couple's suite, an indoor/outdoor relaxation area with steam room, poolside treatment cabana, a full service beauty salon, a fitness room and an Aveda retail area. Spa guests have direct access to the hotel's tropical gardens, pool and beach area.

### SUSTAINABILITY

As a Green Globe certified property, green hotel operations and environmental sustainability are one of the main pillars of The Palms Hotel & Spa's mission and values. Since 2010, our "Inspired by Nature Program" has shown our commitment to this cause while setting the standards and providing the guidelines to minimize our impact on the environment and creating awareness of local environmental issues at stake.



**The Palms Hotel & Spa**  
3025 Collins Avenue, Miami Beach, FL 33140  
T 305 534 0505 F 305 534 0515  
[thepalmshotel.com](http://thepalmshotel.com)



## Accommodations

The Palms Hotel & Spa features 251 guestrooms and suites, overlooking the Atlantic Ocean or Miami Beach cityscape. The décor draws upon the soft hues of sand and sea with custom designed wood furnishings and contrasting fabrics in varying shades of brown, cream and turquoise with orange accents, and feature pillow-top mattresses and 400-thread count Egyptian cotton linens. Spa-inspired bathrooms feature state-of-the-art fixtures including a rain shower head and aqua-colored mosaic tiles and Natural BeeKind Toiletries.



### STANDARD CITYVIEW

Ideal for short stays or business travel, these rooms feature one king-size bed or two double-beds and one bathroom with a shower. Baby cribs are not available for this room type. Approximately 270 sq. ft. (25m<sup>2</sup>) living space.



### PREMIER CITYVIEW

These rooms have split-plan bathrooms and feature one king-size bed or two double-beds, a dining table and comfortable arm chairs. Approximately 270 sq. ft. (25m<sup>2</sup>) living space.



### IN-ROOM AMENITIES & SERVICES

- 49" flat screen plasma TV with on-demand pay movies, music and Chromecast Entertainment Streaming
- Guest Phone
- iHome alarm clock radio w/ Bluetooth connectivity for music
- Posturepedic pillow-top mattresses
- 400-thread count Egyptian cotton linens
- Lightweight down comforter and pillows
- Wireless internet access
- Air purification
- Spa-inspired bathrooms with rain showers
- Natural BeeKind toiletries
- Hair dryers and plush bathrobes
- Iron with ironing board
- In-room safe
- Fully stocked private bar
- Julius Meinl coffee maker
- 24-hour room service
- Turn-down service
- Daily housekeeping service
- Laundry and dry cleaning service



### PARTIAL OCEANVIEW

Located on the 3rd and 4th floors of the hotel these rooms feature floor-to-ceiling panoramic views of the hotel's tropical gardens and some have partial views of the Atlantic Ocean. They come with either one king-size bed or two double beds, a dining table and a sitting area. Approximately 350 sq. ft. (33m<sup>2</sup>) living space.



### OCEANFRONT

With spectacular views of the tropical gardens and the Atlantic ocean from floor-to-ceiling panoramic windows, these rooms feature split-plan bathrooms, one king-size bed or two double-beds, a dining table and comfortable arm chairs. Approximately 380 sq. ft. (35m<sup>2</sup>) living space.

# Accommodations



## SUPERIOR OCEANFRONT

Featuring floor-to-ceiling panoramic windows and spectacular views of the ocean and tropical gardens, these rooms feature 1 King bed, a double sleeper sofa, sitting area and a dining table. Approximately 400 sq. ft. (37m2) living space.



## JUNIOR SUITE CITYVIEW WITH ROOFTOP TERRACE

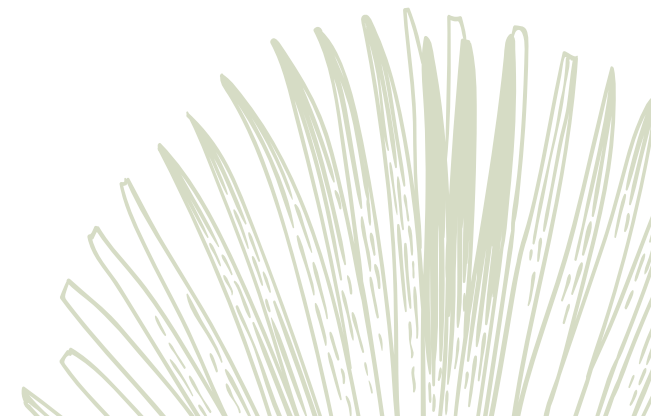
Our junior suites are located on our top floor and feature 1 King bed, a sitting area and a rooftop terrace overlooking the Miami Beach cityscape. Approximately 490 sq. ft. (45m2) living space.



## ONE-BEDROOM OCEANFRONT SUITE WITH ROOFTOP TERRACE

With spectacular views of the Atlantic Ocean, a rooftop terrace and a separate living area, our 1 Bedroom Suites feature split-plan bathrooms, 1 King bed, a sitting and a dining area. Approximately 790 sq. ft. (73m2) living space.

Room Occupancy (in existing bedding)	Beds	Max. Guests
Standard / Premier Cityview	1 King	2
Standard / Premier Cityview	2 Double Beds	4
Partial Oceanview	1 King	2
Partial Oceanview	2 Double Beds	4
Oceanfront	1 King	2
Oceanfront	2 Double Beds	4
Superior Oceanfront	1 King + Sofa Bed	4
Junior Suite Cityview	1 King + Sofa Bed	4
1-Bedroom Oceanfront Suite	1 King + Sofa Bed	4







**The Palms Hotel & Spa**

3025 Collins Avenue, Miami Beach, FL 33140  
T 305 534 0505 F 305 534 0515  
[thepalmshotel.com](http://thepalmshotel.com)