

Presenting the

LOCAL DESTINATION

wedding



OCEAN EDGE
RESORT & GOLF CLUB

CAPE COD, MASSACHUSETTS



CLOSE
to home.
BEYOND
expectations.

You don't need a passport to experience a destination wedding that you and your guests will talk about for years to come. Everything lives in one place. Accommodations. Venues. Activities. Downtime. Celebration. Easy to reach for New England guests and simple for those flying in via nearby airports means fewer logistics and more time together.

Ocean Edge Resort nestles into the elbow of Cape Cod in Brewster, spanning 429 acres along North America's largest beach flats. Thanks to its west-facing position, it's known for something rare on the East Coast—sunsets that melt straight into the water, and a reputation for warmer conditions that locals (and even the weather-man) quietly appreciate.



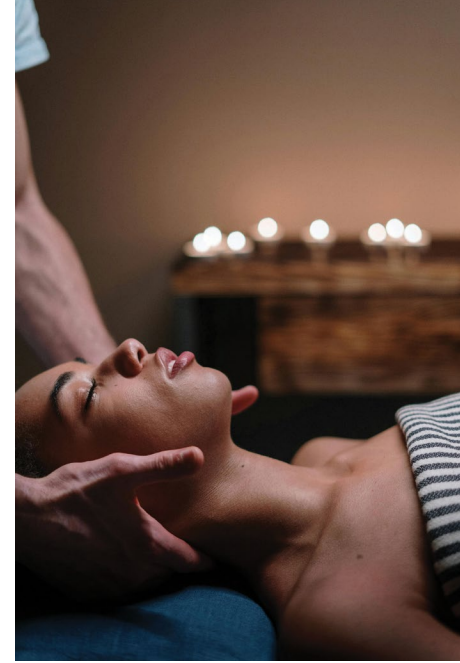
Here, exchange vows barefoot on the beach, on a terrace overlooking the bay, beneath a sparkling tent on a grand lawn, or inside a turn-of-the-century mansion that's welcomed generations of celebrations. Despite popular belief, these are not mutually exclusive. You can have it all.

Contents

2–5	The Local Destination Wedding
6–23	Venues
24–27	Dining & Gathering Spaces
28–29	The Find You Framework
30–33	Framework Enhancements: Defining Moments
34–35	Accommodations
36–37	Venue Floorplans
38	Contact



More than a
V E N U E .
It's a wedding
EXPERIENCE.



Some remember the vows. Others, the bonfire. Someone will still be talking about the lobster bake (and the cold plunge they didn't expect to love) at your tenth anniversary party.

That's the beauty of a Local Destination Wedding at Ocean Edge...*everyone* belongs.



Together, with the space for everyone to enjoy it their own way.

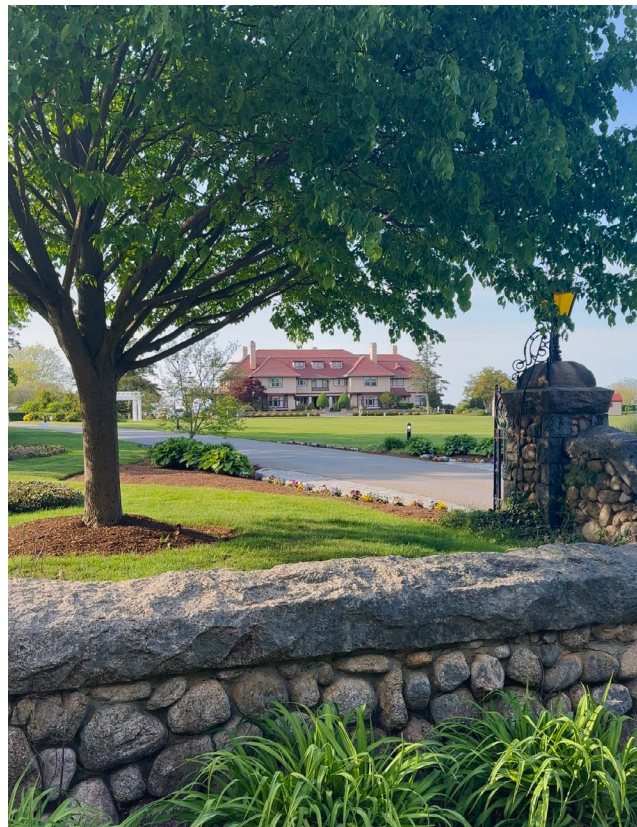
- Your college friends.
- Your parents' friends.
- Your siblings.
- Early risers.
- Night owls.



THE MANSION
is at the
HEART
of Ocean Edge.

The virtues of getting married at Ocean Edge don't stop short at a pretty backdrop, but it sets the stage for one heck of a fairytale wedding. How the story unfolds is up to you.

The Mansion makes for a grand arrival: Welcoming, timeless, and easy to settle into. Home to multiple indoor and outdoor dining spaces, guests naturally gravitate to this fieldstone estate. It was built in 1890 by descendants of Cape Cod's original settlers, the Nickersons, who retreated to these shores for golf, sailing, and sun. Still independent and family-owned, Ocean Edge upholds this unique charm.



The Mansion BALLROOM

4,528 sq. ft. | Up to 260 guests



Perfect for couples who want classic elegance without stiffness that means “all business.” The neutral palette and pendant chandeliers make the room feel gracious and welcoming, not staged. The Ballroom’s lobby and small outdoor patio serve as extra spaces to mix and mingle, enhancing the already beautiful balance between space and warmth—all the elements you need to host a lively reception without losing a hint of intimacy.

The Ballroom TERRACE

2,000 sq. ft. | Up to 200 guests

One floor up, you’ll find the Ballroom Terrace, a portion of our acclaimed Ocean Terrace reserved just for you. It provides the perfect landing for a cocktail hour with a waterview.



Nickerson MANSION

3,334 sq. ft. | Up to 50 guests



For intimate celebrations, the Nickerson Mansion inspires dramatic staircase arrivals framed by rich woodwork, detailed moldings, and crystal chandeliers—adding an unmistakable sense of romance. A series of thoughtfully proportioned rooms creates the feeling of a private home rather than a traditional event venue. Seated dinners unfold like long meals among friends, while celebrations move effortlessly from room to room. Think fewer seats, more conversation.



CARRIAGE House

5,081 sq. ft.

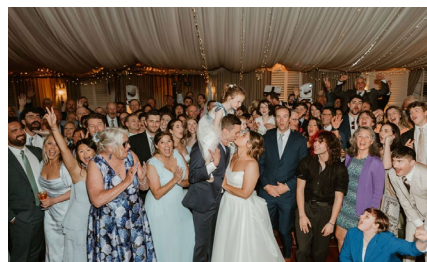


A romantic storybook setting, The Mansion's former stables, with a sweeping arched portico and vaulted ceilings, extend breathtaking views over Cape Cod Bay. This quaint locale is the ideal venue for both weddings and rehearsal dinners, with a variety of configurations possible. Get married alfresco with the Carriage House as your backdrop, sip cocktails in the Roland Nickerson room, and get ready in the Samuel Nickerson room upstairs. The fairytale is all yours.



BAY PINES Pavilion

5,000 sq. ft. | Up to 220 guests



Available April through November, Bay Pines Pavilion offers privacy with flexibility, set apart from the main flow of the resort and surrounded by trees. It's ideal if you want a contained ceremony and celebration space with clandestine, garden-party allure.



BAY PINES Pool

Up to 200 guests

For twilight welcome parties, casual gatherings, or post-wedding afternoons that don't require an agenda. The pool becomes a natural meeting place—easy, social, and relaxed. Guests come and go, conversations overlap, and the weekend continues without needing to be orchestrated.



Bay Pines BEACH

Up to 300 guests



Exchange vows on a private beach that just happens to be North America's largest beach flats? When the sun dips into the watery horizon, painting the sky in pastel hues? No, it's not too good to be true. Mother Nature provides the setting, we provide the seating, giving you a front-row view of Cape Cod Bay and a beautiful future ahead.

Ocean TERRACE

8,000 sq. ft. | Up to 300 guests



Open air. Big sky. A horizon that does the work for you. Ocean Terrace is for couples who want the celebration to feel expansive and relaxed at the same time. Sunset ceremonies lead seamlessly into open-air receptions, where guests can drift between dancing, conversation, and quiet moments overlooking the bay.



CEREMONIES *on the* Great Lawn

15,000 sq. ft. | Up to 500 guests

Wide open, timeless, and quietly dramatic. The Great Lawn offers space without formality—framed by The Mansion and grounded by the landscape. It's a natural choice for couples who want the ceremony to feel present, unfussy, and shared.



RECEPTIONS *on the* Great Lawn

8,400 sq. ft. | Up to 500 guests



Dinner under the sky. Dancing under the stars. Tent-friendly and endlessly flexible, the Great Lawn allows receptions to take on your personality—whether that means long tables and candlelight or an energetic dance floor that keeps people moving well into the night.



LINX Pavilion

2,388 sq. ft. | Up to 100 guests



Overlooking the fairways with an open, easygoing layout, Linx Pavilion is ideal for smaller weddings that want to go big on ambiance. With customizable features, the ceremony-to-cocktail hour transition is seamless, allowing guests to move freely between indoor and outdoor spaces.

SIDE PORCH at The Beach House Spa

Designed to feel like hanging out at your best friend's beach house, the light-filled lounge is ideal for bridal party celebrations before the celebration. Group primp with makeup stations, hair-washing sinks, and a blow-dry bar. After-hours, unique bachelorette soirées like private sound baths, psychic readings, and meditations ensure your nuptials are nostalgic.



Backyard *at the* CHARM

2,595 sq. ft. | Up to 100 guests



Once a historic charm school, now a boutique hideaway with plenty of personality. The Charm's backyard lends itself to relaxed, intimate celebrations—poolside cocktails, gourmet picnic rehearsal dinners, fireside drinks, and backyard weddings that feel entirely your own. Indoors, a private banquet room offers a comfortable option for gathering when the moment calls for it. How's that for gracious?



FOOD
is our
LOVE
language.

At Ocean Edge, menus flex to match the moment: seated dinners, relaxed buffets with chef-attended stations, raw bars, late-night bites, and interactive elements guests don't expect. Couples often mix styles across the weekend, letting meals feel celebratory, social, or restorative.

Wellness-forward options are always in the mix: fresh poke bowls, protein-rich plates, vibrant vegetarian dishes, thoughtful gluten-free offerings, and handcrafted mocktails—ideal for spa days, sound baths, or early mornings by the bay.

If you can imagine it, chances are we can serve it.



WHERE *it all comes* TOGETHER.

Each space sets a different tone—some made for lingering dinners, others for mingling, celebrating, or easing into the day. Whether you just want to reserve a quiet corner or plan a venue takeover, complimentary tastings help your palate decide what's on the menu.

OCEAN TERRACE



From sunset cocktails to receptions—and mimosa-fueled brunches the next morning—this open-air venue with sweeping views invites guests to linger.

CARRIAGE HOUSE

A quietly charming setting within the former stables, with sweeping arched portico and vaulted ceilings, The Carriage House makes for a quintessential turn-of-the-century setting for welcome dinners and social gatherings. See floorplans on page 35 for the room configurations.



CAPTAIN'S QUARTERS

Three distinguishing rooms inside The Mansion named after famed sea captains (Biddle, Lawrence, and Bowen) serve as popular



venues for refined rehearsal dinners and candlelit gatherings, appointed with historic details and private balconies overlooking the bay.

THE CHARM

From indoor tea parties to elegant al fresco dinners in the backyard, The Charm graciously flexes to entertain and amuse.



BAY PINES VILLAS PRIVATE DINING

Catered meals for families and close friends—shared breakfasts, relaxed dinners, or late-night bites in a private setting.



BAYZO'S PUB



A natural choice for welcome parties and relaxed rehearsal dinners that turn into late nights, with options for live music, pub fare and perfectly poured pints.

ROSCOMMON ROOM

A carved wood bar, glowing fireplace, and warm ambiance make this room perfect for candlelit dinners, meaningful toasts, and cooler-evening gatherings.



LINX TERRACE & TAVERN

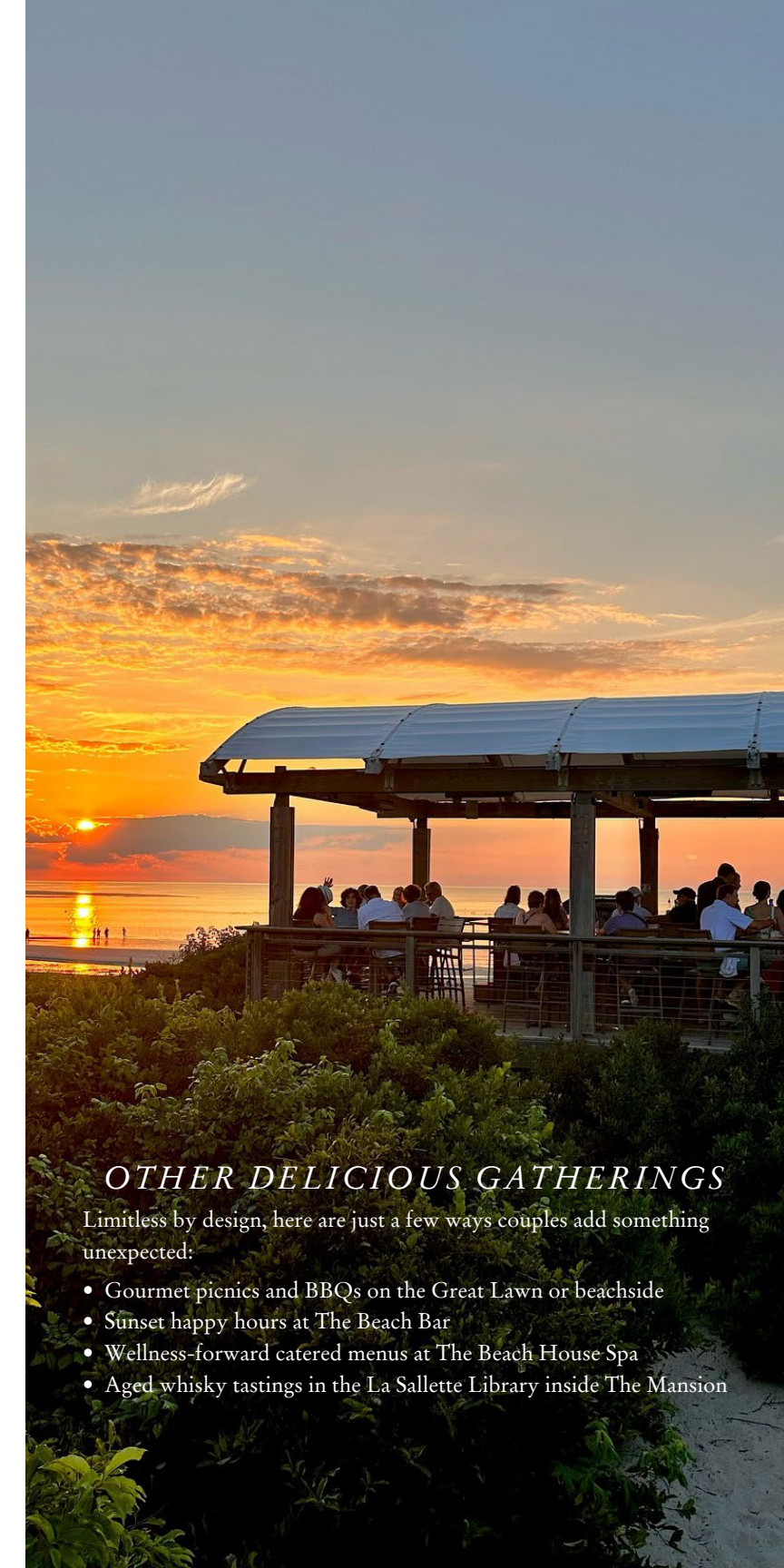
Modern comfort-driven menus and the 19th hole at our Nicklaus Design championship golf course. Ideal for post-round lunches or casual group dinners.



OTHER DELICIOUS GATHERINGS

Limitless by design, here are just a few ways couples add something unexpected:

- Gourmet picnics and BBQs on the Great Lawn or beachside
- Sunset happy hours at The Beach Bar
- Wellness-forward catered menus at The Beach House Spa
- Aged whisky tastings in the La Sallette Library inside The Mansion



Like your
WEDDING,
this is just the
BEGINNING.

At Ocean Edge, we don't believe in wedding packages that tell you who to be.

The **Find You Framework** is our starting point. It covers everything you need for a seamless, elevated celebration, then lets you personalize the rest based on how you want your wedding to feel. Some couples go big on togetherness. Some lean into wellness. Others want full-tilt fun from welcome drinks to farewell brunch. Most do a little of everything.

START WITH THE FOUNDATION

THE FIND YOU FRAMEWORK INCLUDES:

Venues:

- The Mansion Ballroom (or) Bay Pines Pavilion
Alternate venues priced separately

Cocktail Hour:

- One-hour premium bar
- Four passed hors d'oeuvres
- Two stationary displays

Reception:

- Four-hour premium bar
- Champagne toast
- Three-course dinner
- Wedding cake with truffles and chocolate-dipped strawberries
- Hardwood dance floor
- Reception tables, chairs, linens, flatware, glassware, and china

Just for you:

- One complimentary night at The Mansion
- Private bridal lounge in The Mansion

**FROM THERE, EVERYTHING
BECOMES FLEXIBLE**

FOR EXAMPLE, YOUR WEDDING MIGHT INCLUDE:

The Find You Framework +

- 1 raw bar display
- Tableside wine with entrée (or throughout dinner)
- Appetizer course with dinner
- 2 signature drinks on the bar package
- Extra night (or more) at The Mansion
- Bridal Lounge at The Beach House Spa
- Golf Foursome at Ocean Edge Nicklaus Design Course



Not PACKAGES, POSSIBILITIES.

To help you imagine all that's possible, we group enhancements into what we call "Defining Moments." Mix, match, swap, or invent entirely new moments with our team.



elevate EXCURSIONS & EXPERIENCES *Once-in-a-lifetime moments*

Ocean Edge can help you curate experiences that take guests beyond the ordinary, whether that means leaning into local flavor or planning something entirely unexpected. If you can imagine it, chances are we know someone who can help make it happen.

Couples often build in:

- Oyster farm tour and tasting
- Sunset sail
- Whale watching tour
- Clam-digging expedition

restore WELLNESS & SPA *Space to slow down and reset*

From private floating sound baths and hot Pilates in an infrared retreat studio to full spa days and yoga on the beach, restorative moments can be woven throughout the weekend. The Beach House Spa—named one of *USA Today's Top 10 Hotel Spas* in 2025—offers spaces designed for gathering as well, including The Side Porch for private spa parties before or after the big day.

It's also a natural place to get ready. Professional makeup stations, room for your glam squad, catered food and beverage menus, and after-hours access allow the spa to become part of the celebration itself.

Couples often build in:

- Private spa time for getting ready
- Cold plunge and beach social sauna
- Floating sound baths or intention ceremonies
- Yoga on the beach or in the infrared studio
- IV drip bar



gather DINNER & SOCIAL EVENTS *Moments that bring everyone together*

Gathering at Ocean Edge can be polished or relaxed (or a mix of both). Lobster bakes are classic, but they just crack the surface. Some couples host formal rehearsal dinners in the Roscommon Room with custom menus, florals, and live music. Others opt for BBQs, lawn games and beach fires. Many choose a combination, letting different moments set different tones.

Couples often build in:

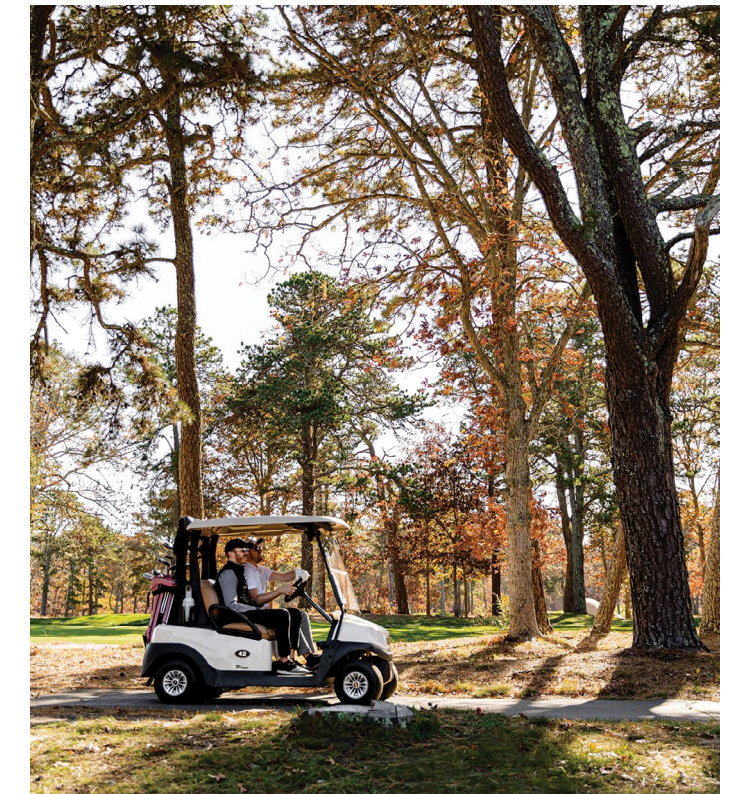
- Classic Cape Cod BBQ
- Lawn games like sack races, croquet, cornhole and bocce for all ages
- Beach bonfires with s'mores and late-night snacks
- Pub nights at Bayzo's with reserved space and hosted drinks
- Poolside gatherings with music and light bites

play SPORTS & ACTIVITY *Shared ways to have fun on the move*

With dedicated pickleball courts, nine tennis courts, a Nicklaus Design golf course, five pools—including two indoor pools and a hot tub—plus 26 miles of the Cape Cod Rail Trail right outside your door, Ocean Edge offers built-in ways to stay active together. Add in the sprawling Brewster Flats beach, perfect for sandcastle building at low tide or paddleboarding when the tide rolls in, and guests have plenty of ways to stay in motion.

Couples often build in:

- Friendly pickleball tournaments
- Casual golf outings
- Group bike rides
- Sandcastle building contest
- Stand-up paddleboarding outings



Four
SEASONS.
Four very different
WEDDINGS.

While every wedding at Ocean Edge begins with the Find You Framework (the foundation that makes the day seamless), how couples layer in Defining Moments proves as personal as their relationship. Even though we are the largest resort on the Cape, there's no factory setting for wedding planning—we have the space, flexibility, and freedom to shape celebrations that feel unmistakably yours, in every season. What follows are a few imagined couples' soireés and the very real ways seasonality can influence how these moments come together.



Nick & Tina's
SUMMER CAPE CODDLER



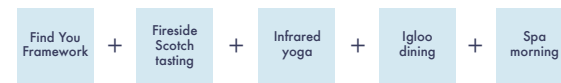
Defining Moments: Gather + Play

Nick and Tina wanted a wedding that felt like summer on the Cape—easy, social, and full of movement. Guests arrived early, biked the flats, lingered over oysters they harvested with a local

farmer, and gathered again that night for a bonfire and s'mores by the bay. The wedding day itself was polished but unpretentious, with toes-in-the-sand energy, letting the Brewster Flats create a flawless backdrop. This was a weekend built around togetherness—no rushing, no over-planning, just room to enjoy it all.



Seth & Grace's
WINTER COMFORT & JOY



Defining Moments: Restore + Elevate

Seth and Grace fell in love with winter on the Cape—the stillness, the sea air, the sense that you have the place to yourself. Their guests donned fur stoles to the black-tie wedding bathed in candlelight in the Nickerson Mansion, lingered over multi-course dinners tucked in under the stars inside clear igloos. Quiet mornings began with hot yoga in the Infrared Retreat Studio and ended with scotch poured neat beside the fire in the La Sallette Library. Of course, everyone was taken by surprise by an unforgettable ocean cold plunge, followed by a beachside social sauna to ward off any cold feet. Festivities felt calm, cozy, and deeply personal. Proof that winter weddings can be just as warm as summer ones at Ocean Edge.



Mark & Brian's
SPRING BRING-ON-THE-FUN



Defining Moments: Play + Gather

Mark and Brian planned their wedding for late spring, when the Cape air is warming, daffodils are in bloom, and everything turns that technicolor green. Guests arrived ready to move, not sit still. Cool mornings started with bike rides along the flats and the season's first golf swings, followed by sports massages at the spa to work out the kinks and keep things going. A relaxed afternoon clam bake brought everyone together: families, friends, and even a few dogs (still allowed on the beach in May). From lawn games to pints and pub fare at Bayzo's, the weekend felt like a reunion with fresh air—energized, easy, and full of shared moments. Guests still argue about who won the pickleball finals, but everyone agrees on one thing: spring was the perfect call.



Glen & Robin's
AUTUMN INVITING EASE



Defining Moments: Gather + Restore + Elevate

Robin & Glen chose fall for the feeling it brings. The pace naturally eases and everything feels a little more grounded. With the leaves just starting to show hints of color and crisp nights bidding goodbye to summer, they exchanged vows under the elaborately decorated tent on The Mansion's front lawn. As twilight settled in, sparkling lights flickered on, the dance floor filled, and the celebration unfolded at just the right speed. Throughout the weekend, they were thoughtful about how their guests would feel. Mocktail-fueled, poke-bowl lunches, spa resets afterhours complete with an IV drip bar, quiet fireside moments, and long conversations replaced packed schedules and late nights. They wanted their friends—whose daily lives rarely slow down—to return home feeling lighter, recharged, and genuinely uplifted. It was a wedding rooted in togetherness, warmth, and timing that showcases how autumn on the Cape has a way of bringing everything into balance.

SPACE

for

EVERYONE

to stay.

One of the defining advantages of an Ocean Edge wedding is simple: everyone can stay in one place. With hundreds of stay options across 429 acres, Ocean Edge can host entire wedding groups—from immediate family and wedding party to friends, extended relatives, and even the family dog in select villas. Guests choose the setting that suits them best, while remaining connected to the celebration throughout the weekend.



THE MANSION & BAY PINE VILLAS

Set alongside the historic turn-of-the-century mansion, modern AAA Four Diamond guestroom wings offer 90 contemporary rooms alongside adjacent two- and three-bedroom Bay Pines Villas—several boasting water views. Walkable to the private beach, wedding venues, dining, and gathering spaces, this is the most connected place to stay, right at the heart of the celebration.



THE VILLAGES

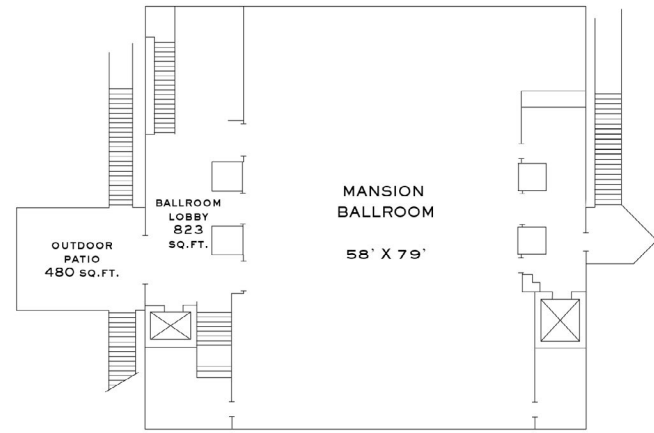
Located just across the street and down the road from The Mansion, The Villages offer multiple enclaves of one-, two- and three-bedroom villas. With living space, kitchens, washer/dryers and balconies or patios offer plenty of room to spread out, these 216 rooms are especially well-suited for families and friends staying together. (Select villas are pet-friendly, welcoming four-legged family members for the festivities as well!) Home to three pools, a pool bar, kayaks, our private Nicklaus Design Golf Course, Linx Tavern and more, no matter what village you call home, fun is always within reach.



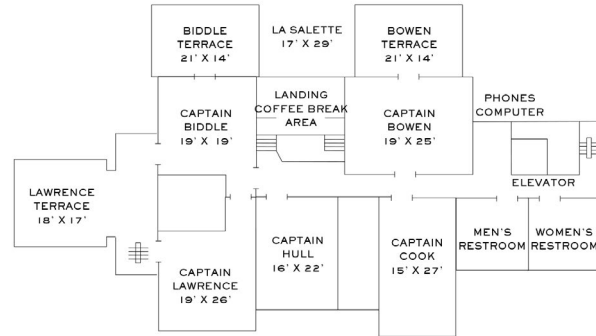
THE CHARM

The newest addition to the Ocean Edge family, The Charm is an intimate, adults-only boutique property with just 20 rooms, set further down the road in a former charm school. It's an easy space to take over and make your own, offering the feel of a private residence within the larger Ocean Edge experience. Ideal for couples or guests seeking a quieter, more exclusive stay between celebrations.

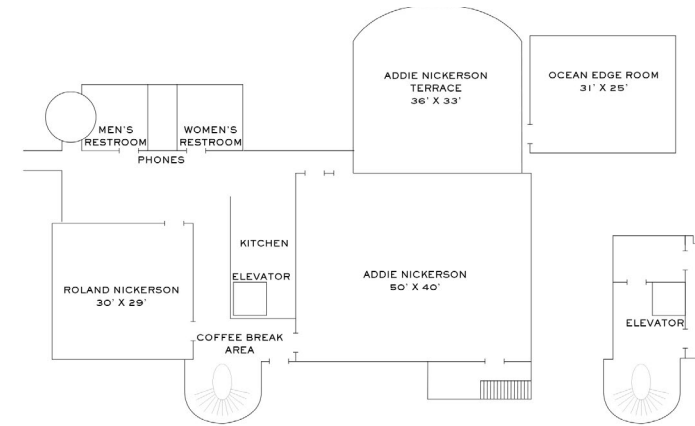
Venue FLOORPLANS



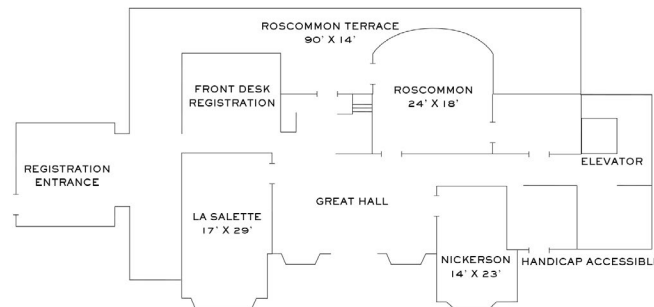
MANSION BALLROOM



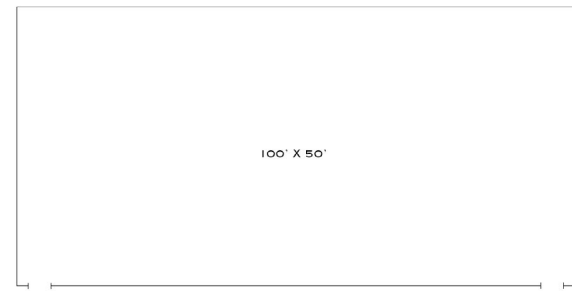
MANSION SECOND FLOOR



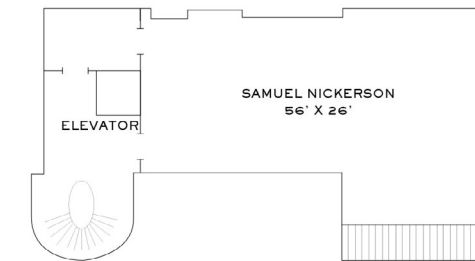
CARRIAGE HOUSE FIRST FLOOR



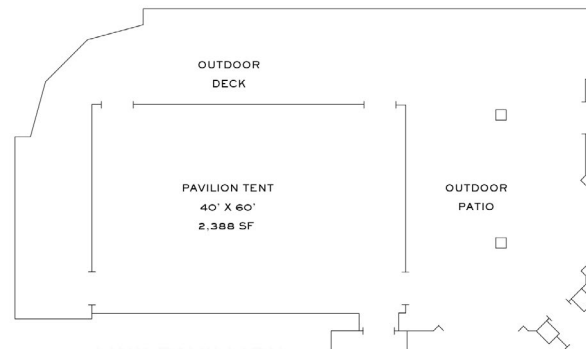
MANSION FIRST FLOOR



BAY PINES PAVILION



CARRIAGE HOUSE SECOND FLOOR



LINX PAVILION

SEATING CAPACITY

SEATING CAPACITY	DIMENSIONS	SQUARE FEET	CEILING HEIGHT	RECEPTION	THEATRE	ROUNDS	CONFERENCE	HOLLOW SQUARE	U SHAPE	CLASSROOM
MANSION BALLROOM										
MANSION BALLROOM	58' x 79'	4528	14'	500	500	300	--	125	100	300
BALLROOM SEC. A	25' x 36'	1010	14'	110	80	70	40	36	30	60
BALLROOM SEC. B	32' x 36'	936	14'	100	80	70	30	36	30	50
BALLROOM SEC. C	33' x 34'	1150	14'	120	120	90	40	50	36	70
BALLROOM SEC. D	33' x 30'	910	14'	100	80	70	30	44	30	50
BALLROOM SEC. A & B	33' x 53'	1948	14'	225	200	130	50	80	60	120
BALLROOM SEC. C & D	36' x 58'	2060	14'	250	220	140	50	80	60	140
BALLROOM FOYER	--	838	14'	--	--	--	--	--	--	--
BALLROOM TERRACE	--	8000	--	--	--	--	--	--	--	--
FIRST FLOOR MANSION										
LA SALETTE	17' x 29'	493	10'	60	60	50	26	28	20	24
ROSCOMMON	24' x 18'	432	10'	50	60	50	20	24	20	24
NICKERSON	14' x 23'	322	9'	50	30	30	16	--	12	18
SECOND FLOOR MANSION										
CAPTAIN BIDDLE	19' x 19'	361	8' 9"	40	40	30	12	16	15	18
CAPTAIN LAWRENCE	19' x 28'	494	8' 9"	60	60	50	20	24	20	30
CAPTAIN HULL	16' x 22'	352	8' 9"	25	30	20	12	--	12	16
CAPTAIN BOWEN	19' x 25'	475	8' 9"	40	40	40	16	18	15	30
CAPTAIN COOK (BOARDROOM)	15' x 27'	405	8' 9"	--	--	--	14	--	--	--
CARRIAGE HOUSE										
ROLAND NICKERSON	30' x 29'	870	12'	80	80	60	26	36	24	50
ADDIE NICKERSON	40' x 50'	1980	9' 4"	200	200	140	44	58	50	100
SAMUEL NICKERSON	26' x 56'	1456	7' 3"	180	180	80	50	62	54	80
OCEAN EDGE ROOM	31' x 25'	775	7' 3"	50	50	50	16	28	20	40
BAY PINES PAVILION	50' x 100'	5000	13'	500	500	250	--	125	80	225
LINX PAVILION	40' x 60'	2388	13'	150	150	150	50	60	50	100

ABOVE FIGURES ARE MAXIMUM CAPACITY WITHOUT AUDIO-VISUAL EQUIPMENT, BUFFETS, HEAD TABLE OR DANCE FLOOR.

Find *you.*



OCEAN EDGE
RESORT & GOLF CLUB

CAPE COD, MASSACHUSETTS

2907 Main Street, Brewster, MA | Oceanedgeweddings.com | 508-896-9000 | catering@oceanedge.com